

C-more[®] Micro-Graphic Programming Software Installation Guide

EA-MG-PGMSW-SIG



⚡ WARNING ⚡

Thank you for purchasing automation equipment from AutomationDirect.com™, doing business as, AutomationDirect. We want your new automation equipment to operate safely. Anyone who installs or uses this equipment should read this publication (and any other relevant publications) before installing or operating the equipment.

To minimize the risk of potential safety problems, you should follow all applicable local and national codes that regulate the installation and operation of your equipment. These codes vary from area to area and usually change with time. It is your responsibility to determine which codes should be followed, and to verify that the equipment, installation, and operation is in compliance with the latest revision of these codes.

At a minimum, you should follow all applicable sections of the National Fire Code, National Electrical Code, and the codes of the National Electrical Manufacturer's Association (NEMA). There may be local regulatory or government offices that can also help determine which codes and standards are necessary for safe installation and operation.

Equipment damage or serious injury to personnel can result from the failure to follow all applicable codes and standards. We do not guarantee the products described in this publication are suitable for your particular application, nor do we assume any responsibility for your product design, installation, or operation.

Our products are not fault-tolerant and are not designed, manufactured or intended for use or resale as on-line control equipment in hazardous environments requiring fail-safe performance, such as in the operation of nuclear facilities, aircraft navigation or communication systems, air traffic control, direct life support machines, or weapons systems, in which the failure of the product could lead directly to death, personal injury, or severe physical or environmental damage ("High Risk Activities").

AutomationDirect specifically disclaims any expressed or implied warranty of fitness for High Risk Activities.

For additional warranty and safety information, see the Terms and Conditions section of our catalog. If you have any questions concerning the installation or operation of this equipment, or if you need additional information, please call us at 770-844-4200.

This publication is based on information that was available at the time it was printed. At AutomationDirect we constantly strive to improve our products and services, so we reserve the right to make changes to the products and/or publications at any time without notice and without any obligation. This publication may also discuss features that may not be available in certain revisions of the product.

Trademarks

This publication may contain references to products produced and/or offered by other companies. The product and company names may be trademarked and are the sole property of their respective owners. AutomationDirect disclaims any proprietary interest in the marks and names of others.

Copyright 2006-2009, AutomationDirect.com™ Incorporated, All Rights Reserved

No part of this manual shall be copied, reproduced, or transmitted in any way without the prior, written consent of AutomationDirect.com™ Incorporated. AutomationDirect retains the exclusive rights to all information included in this document.

⚡ AVERTISSEMENT ⚡

Nous vous remercions d'avoir acheté l'équipement d'automatisation de Automationdirect.comMC. Nous tenons à ce que votre nouvel équipement d'automatisation fonctionne en toute sécurité. Toute personne qui installe ou utilise cet équipement doit lire la présente publication (et toutes les autres publications pertinentes) avant de l'installer ou de l'utiliser.

Afin de réduire au minimum le risque d'éventuels problèmes de sécurité, vous devez respecter tous les codes locaux et nationaux applicables régissant l'installation et le fonctionnement de votre équipement. Ces codes diffèrent d'une région à l'autre et, habituellement, évoluent au fil du temps. Il vous incombe de déterminer les codes à respecter et de vous assurer que l'équipement, l'installation et le fonctionnement sont conformes aux exigences de la version la plus récente de ces codes.

Vous devez, à tout le moins, respecter toutes les sections applicables du Code national de prévention des incendies, du Code national de l'électricité et des codes de la National Electrical Manufacturer's Association (NEMA). Des organismes de réglementation ou des services gouvernementaux locaux peuvent également vous aider à déterminer les codes ainsi que les normes à respecter pour assurer une installation et un fonctionnement sûrs.

L'omission de respecter la totalité des codes et des normes applicables peut entraîner des dommages à l'équipement ou causer de graves blessures au personnel. Nous ne garantissons pas que les produits décrits dans cette publication conviennent à votre application particulière et nous n'assumons aucune responsabilité à l'égard de la conception, de l'installation ou du fonctionnement de votre produit.

Nos produits ne sont pas insensibles aux défaillances et ne sont ni conçus ni fabriqués pour l'utilisation ou la revente en tant qu'équipement de commande en ligne dans des environnements dangereux nécessitant une sécurité absolue, par exemple, l'exploitation d'installations nucléaires, les systèmes de navigation aérienne ou de communication, le contrôle de la circulation aérienne, les équipements de survie ou les systèmes d'armes, pour lesquels la défaillance du produit peut provoquer la mort, des blessures corporelles ou de graves dommages matériels ou environnementaux («activités à risque élevé»). La société Automationdirect.comMC nie toute garantie expresse ou implicite d'aptitude à l'emploi en ce qui a trait aux activités à risque élevé.

Pour des renseignements additionnels touchant la garantie et la sécurité, veuillez consulter la section Modalités et conditions de notre documentation. Si vous avez des questions au sujet de l'installation ou du fonctionnement de cet équipement, ou encore si vous avez besoin de renseignements supplémentaires, n'hésitez pas à nous téléphoner au 770-844-4200.

Cette publication s'appuie sur l'information qui était disponible au moment de l'impression. À la société Automationdirect.com, nous nous efforçons constamment d'améliorer nos produits et services. C'est pourquoi nous nous réservons le droit d'apporter des modifications aux produits ou aux publications en tout temps, sans préavis ni quelque obligation que ce soit. La présente publication peut aussi porter sur des caractéristiques susceptibles de ne pas être offertes dans certaines versions révisées du produit.

Marques de commerce

La présente publication peut contenir des références à des produits fabriqués ou offerts par d'autres entreprises. Les désignations des produits et des entreprises peuvent être des marques de commerce et appartiennent exclusivement à leurs propriétaires respectifs. Automationdirect.comMC nie tout intérêt dans les autres marques et désignations.

Copyright 2006-2009, Automationdirect.com™ Incorporated, Tous droits réservés

Nulle partie de ce manuel ne doit être copiée, reproduite ou transmise de quelque façon que ce soit sans le consentement préalable écrit de la société Automationdirect.com™ Incorporated. Automationdirect.com™ conserve les droits exclusifs à l'égard de tous les renseignements contenus dans le présent document.

⚡ ADVERTENCIA ⚡

Gracias por comprar equipo de automatización de Automationdirect.com™. Deseamos que su nuevo equipo de automatización opere de manera segura. Cualquier persona que instale o use este equipo debe leer esta publicación (y cualquier otra publicación pertinente) antes de instalar u operar el equipo.

Para reducir al mínimo el riesgo debido a problemas de seguridad, debe seguir todos los códigos de seguridad locales o nacionales aplicables que regulan la instalación y operación de su equipo. Estos códigos varían de área en área y usualmente cambian con el tiempo. Es su responsabilidad determinar cuales códigos deben ser seguidos y verificar que el equipo, instalación y operación estén en cumplimiento con la revisión mas reciente de estos códigos.

Como mínimo, debe seguir las secciones aplicables del Código Nacional de Incendio, Código Nacional Eléctrico, y los códigos de (NEMA) la Asociación Nacional de Fabricantes Eléctricos de E.E.U.U.. Puede haber oficinas de normas locales o del gobierno que pueden ayudar a determinar cuales códigos y normas son necesarios para una instalación e operación segura.

Si no se siguen todos los códigos y normas aplicables, puede resultar en daños al equipo o lesiones serias a personas. No garantizamos los productos descritos en esta publicación para ser adecuados para su aplicación en particular, ni asumimos ninguna responsabilidad por el diseño de su producto, la instalación u operación.

Nuestros productos no son tolerantes a fallas y no han sido diseñados, fabricados o intencionados para uso o reventa como equipo de control en línea en ambientes peligrosos que requieren una ejecución sin fallas, tales como operación en instalaciones nucleares, sistemas de navegación aérea, o de comunicación, control de tráfico aéreo, máquinas de soporte de vida o sistemas de armamentos en las cuales la falla del producto puede resultar directamente en muerte, heridas personales, o daños físicos o ambientales severos ("Actividades de Alto Riesgo"). Automationdirect.com™ específicamente rechaza cualquier garantía ya sea expresada o implicada para actividades de alto riesgo.

Para información adicional acerca de garantía e información de seguridad, vea la sección de Términos y Condiciones de nuestro catalogo. Si tiene alguna pregunta sobre instalación u operación de este equipo, o si necesita información adicional, por favor llámenos al número 770-844-4200 en Estados Unidos.

Esta publicación está basada en la información disponible al momento de impresión. En Automationdirect.com™ nos esforzamos constantemente para mejorar nuestros productos y servicios, así que nos reservamos el derecho de hacer cambios al producto y/o a las publicaciones en cualquier momento sin notificación y sin ninguna obligación. Esta publicación también puede discutir características que no estén disponibles en ciertas revisiones del producto.

Marcas Registradas

Esta publicación puede contener referencias a productos producidos y/u ofrecidos por otras compañías. Los nombres de las compañías y productos pueden tener marcas registradas y son propiedad única de sus respectivos dueños. Automationdirect.com™, renuncia cualquier interés propietario en las marcas y nombres de otros.

Propiedad Literaria 2006-2009, Automationdirect.com™ Incorporated Todos los derechos reservados

No se permite copiar, reproducir, o transmitir de ninguna forma ninguna parte de este manual sin previo consentimiento por escrito de Automationdirect.com™ Incorporated. Automationdirect.com™ retiene los derechos exclusivos a toda la información incluida en este documento. Los usuarios de este equipo pueden copiar este documento solamente para instalar, configurar y mantener el equipo correspondiente. Puede ser usado también para propósitos de educación en institutos de enseñanza.

**AUTOMATIONDIRECT.COM END USER LICENSE
AGREEMENT FOR *C-more* micro PROGRAMMING
SOFTWARE**

IMPORTANT: Before using this software you should carefully read this agreement.

The enclosed *C-more* micro Programming computer software programs (the "Software") are the property of Automationdirect.com, inc. or its suppliers. Before installing, copying, downloading, accessing or otherwise using this package, carefully read this Agreement. If you do not accept the terms and conditions of this Agreement, you should return the enclosed Software and any accompanying items (including any manuals, release notes, binders, etc.), unopened, to Automationdirect.com for a full refund.

1. LICENSE: Subject to the terms and conditions of this Agreement, when you install this software, Automationdirect.com grants you and you accept a non-exclusive license to use the following Software which you obtain from Automationdirect.com.

2. COPYRIGHT: The Software is owned by Automationdirect.com or its suppliers and is protected by United States copyright laws and international treaty provisions. You shall not remove or alter, or permit any person to remove or alter, any of the copyright or other notices of Automationdirect.com or its suppliers on, stated in or affixed to the Software or any of the documentation, or on any diskettes, covers or other packaging containing Software or the documentation.

3. RESTRICTIONS: You acknowledge that the Software and the related documentation delivered to you are and shall remain the property of Automationdirect.com or its suppliers. You may not, and you may not permit others to (a) reverse engineer, decompile, decode, decrypt, disassemble, or in any way derive source code from, the Software; (b) modify, distribute, or create derivative works of the Software; (c) copy (other than for back-up copies), distribute, publicly display, transmit, sell, rent, lease or otherwise exploit the Software.

4. LIMITED WARRANTY: Automationdirect.com warrants that the Software will perform substantially in accordance with the written materials accompanying the Software for a period of ninety (90) days from the date of receipt. EXCEPT AS PROVIDED ABOVE, AUTOMATIONDIRECT.COM MAKES NO REPRESENTATIONS OR WARRANTIES OF ANY KIND, NATURE OR DESCRIPTION, EXPRESS OR IMPLIED, WITH RESPECT TO THE SOFTWARE OR ANY RELATED WRITTEN MATERIALS, INCLUDING, WITHOUT LIMITATION, ANY WARRANTY OF MERCHANTABILITY OR FITNESS FOR ANY PARTICULAR PURPOSE, AND AUTOMATIONDIRECT.COM HEREBY DISCLAIMS THE SAME. This Limited Warranty is void if failure of the Software results from accident, abuse, or misapplication or failure to use the Software in accordance with its documentation.

5. CUSTOMER REMEDIES: Automationdirect.com's entire liability and your exclusive remedy shall be, at Automationdirect.com's option, either refund of the price paid for the defective Software, or repair or replacement of the defective Software, in each case upon return to Automationdirect.com during the warranty period. You must return the defective purchased Software product to Automationdirect.com with a copy of your purchase receipt. Any replacement Software will be warranted for the remainder of the original warranty period or thirty (30) days, whichever is longer.

6. LIMITATION ON LIABILITY: In no event shall Automationdirect.com be liable, whether in contract or in tort, or under any other legal theory (including, without limitation, negligence), for any indirect, special, consequential or incidental damages arising out of or in connection with the Software or any documentation, including, without limitation, lost profits or revenues, loss of data or business information, costs for recreating lost data, business interruption, costs for replacement programs, or any similar damages, or for any claim made against you by any other party, even if Automationdirect.com has been advised of the possibility of such claim. In no event will the liability of Automationdirect.com for any Software exceed the price paid by you for the defective Software product.

7. NO TRANSFER: You may not rent or lease the Software, but you may transfer your rights under each copy of the Software products on a permanent basis with the prior written consent of Automationdirect.com, provided that you transfer this Agreement, the Software, and all accompanying written materials and retain no copies on any computer or other form of media. Any transfer of the Software must include the most recent update and all prior released versions. Any transfer requires that you provide written notification to Automationdirect.com prior to the transfer, the prior written consent of Automationdirect.com, and the recipient's agreement in writing to abide by the terms contained in this Agreement. Automationdirect.com reserves the right to reject the transfer if it is not in the best interest of Automationdirect.com, its customers or authorized resellers.

8. TERM AND TERMINATION: This Agreement and the licenses granted in this Agreement are effective until terminated. You may terminate this Agreement at any time by notifying Automationdirect.com, returning the Software and related documentation, and destroying all copies. This Agreement will also terminate upon your failure to comply with any of its terms, in which event you must return the Software and the written materials to Automationdirect.com and destroy all copies.

9. U.S.GOVERNMENT RESTRICTED RIGHTS: The Software and accompanying documentation are "commercial computer software" and "commercial computer software documentation," respectively, with United States Government rights governed by DFAR Section 227.7202 and FAR Section 12.212, as applicable. Any use, modification, reproduction, release, performance, display or disclosure of the Software and accompanying documentation by the United States Government shall be governed solely by the terms of this Agreement and shall be prohibited except to the extent expressly permitted by the terms of this Agreement.

10. MISCELLANEOUS: No failure or delay to exercise any right or remedy under this Agreement shall operate as a waiver, and a single or partial exercise of any right or remedy will not preclude the further exercise of such right or remedy or any other right or remedy. This Agreement supercedes any other oral or written agreement between you and Automationdirect.com. This Agreement shall be construed and enforced in accordance with the laws of the State of Georgia, without regard to its rules regarding conflicts of law. AutomationDirect.com - 3505 Hutchinson Road - Cumming GA, 30040 - U.S.A

Document History



Programming Software Installation Guide

EA-MG-PGMSW-SIG

Please include the manual number and the manual issue, both which are shown below, when communicating with Technical Support regarding this publication.

Manual Number:	EA-MG-PGMSW-SIG
Issue Number:	First Edition
Issue Date:	September 2006

Publication History

Issue	Date	Description of Changes
First Edition	September 2006	Original
1st Ed. Rev 1.	December 2009	Added Vista

Table of Contents

Introduction	1
Programming Software Installation	3
Launch <i>C-more</i> Micro-Graphic Programming Software ..	13
Uninstalling the Programming Software	14



Notes

Introduction

Conventions Used



Whenever you see the "exclamation mark" icon in the left-hand margin, the paragraph to its immediate right will be a warning. These are very important because the information could prevent injury, loss of property, or even death (in extreme cases). The word **WARNING:** will mark the beginning of the text.



Whenever you see the "notepad" icon in the left-hand margin, the paragraph to its immediate right will be a special note. The word **NOTE:** will mark the beginning of the text.



Whenever you see the "light bulb" icon in the left-hand margin, the paragraph to its immediate right will give you a special tip. The word **TIP:** will mark the beginning of the text.

System Requirements

Following are the minimum system requirements for running *C-more* Micro-Graphic Programming Software on a PC:

- Personal Computer with a 333MHz or higher processor (CPU) clock speed recommended; Intel Pentium/Celeron family or AMD K6/Athlon/Duron family, or compatible processor recommended.
- Keyboard and Mouse or compatible pointing device.
- SVGA 800x600 pixels resolution (1024x768 pixels resolution recommended).
- 150MB free hard-disk space.
- 128MB free Ram (512MB recommended).
- CD-ROM or DVD drive for installing software from the CD or internet access to download.
- Operating System - Windows® Vista, Windows® XP Home / Professional Edition with Service Pack 2 or Windows® 2000 with Service Pack 4.
- USB Port v1.1 or higher.



TIP: Any size monitor will work, but larger monitors enhance the display capabilities of the **C-more** Micro-Graphic Programming Software.

We highly recommend that you use power surge protection for the computer running **C-more** Micro-Graphic Programming Software. A quality surge protector will protect your computer from most surges and spikes; however, an uninterruptible power supply (UPS) will offer the highest level of protection. A UPS provides complete isolation between the AC power source and the computer and has battery backup for blackout and brownout conditions.

If you further need assistance during the software installation, call the AutomationDirect Technical Support team at 770-844-4200.

Programming Software Installation



WARNING: The C-more Micro panel should be disconnected from the PC while installing the C-more Micro-Graphic Programming software.



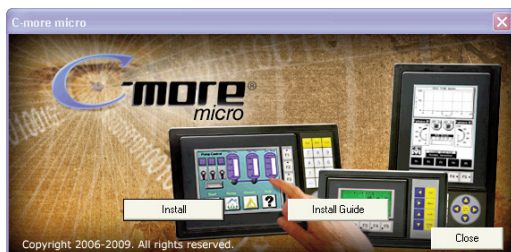
NOTE: Before starting, you must be logged on with administrator privileges or as a member of the administrators group to Install the C-more software. If you do not have administrator privileges, please check with your network administrator.

Step 1: Load the CD

Insert the C-more Micro-Graphic Software CD into the CD drive.

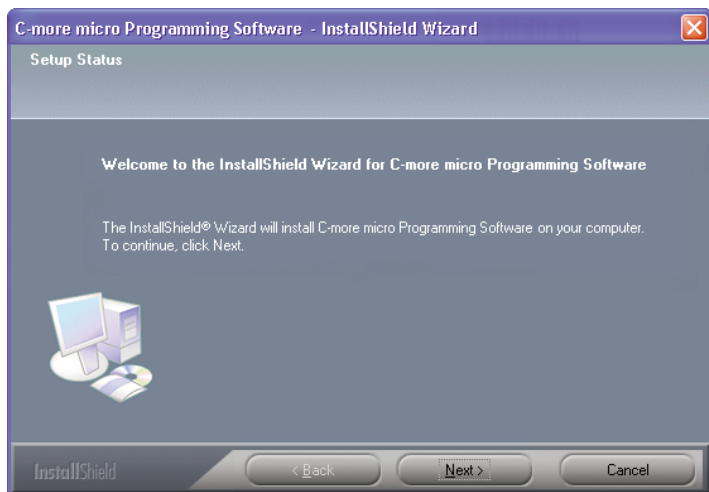
Step 2: Starting the Installation

The CD will begin its auto-install feature. If the auto install is not on, click on **Start** (bottom left of your monitor screen), and select **Run**. In the screen that appears, type "D: setup" if your CD ROM drive is "D." (Usually, your floppy disks are drives "A" and "B", your hard drive is "C" and your CD ROM is "D".) If you are not sure which one is your CD ROM drive, click the **Browse** button on the screen that came up when you clicked on **Run**. Then, click on the down arrow in the field labeled **Look in**. A drop-down menu will appear when you click on this area. Select the CD icon from the drop-down menu. Then, double click on the file **Install.exe** and click the OK button. When the window below appears, click the **Install** button.



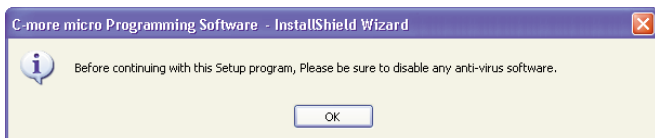
Step 3. Begin the Installation

Click **Next** on the InstallShield Wizard welcome screen to begin the installation.

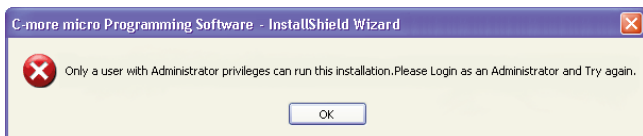


Step 4. Deactivate Your Anti-Virus Software

The installation issues a reminder to temporarily deactivate your anti-virus software during the installation. If it is deactivated, click **OK**.



***NOTE:** an error message is displayed if the user login account you selected does not have administrative rights.*

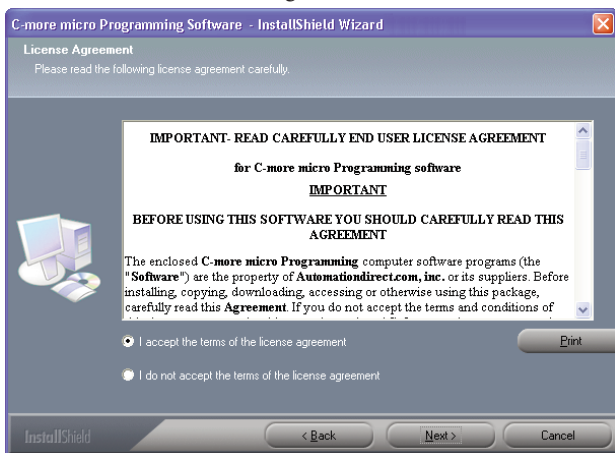


You must be logged on with administrator privileges or be a member of the administrators group to install the *C-more* software. If you do not have administrator privileges, check with your network administrator. When you click **OK** the installation will terminate.

Restart the installation after you have logged in with administrator privileges.

Step 5: License Agreement

Carefully read the software license agreement. If you agree to the terms and conditions of this agreement, select the **I accept the terms of the license agreement** and **Next** buttons.



Step 6: Enter Your Name and Company

Enter your name and the name of your company.

Select which users will be able to run the *C-more* software. If you select **Anyone who uses this computer (all users)**, then all users can use the software. If you want to limit the *C-more* software use to your account only, then select **Only for me (Your Name)**.

Please enter your name and the name of the company for which you work.

User Name:

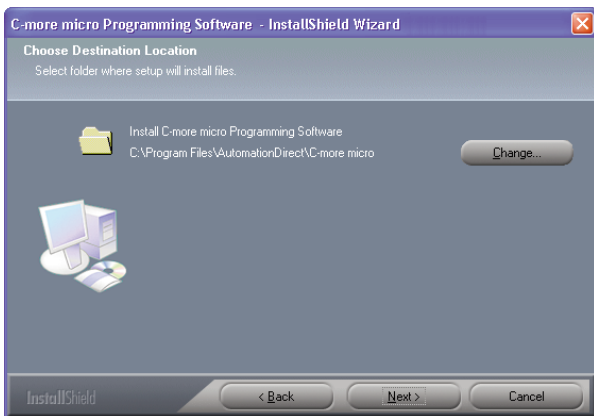
Company Name:

Step 7: Select Installation Directory

This screen lets you choose the folder (directory) where the **C-more Micro-Graphic Programming Software** files will be loaded. By default the software loads to the *C:\Program Files\AutomationDirect\C-more micro* folder. Most software programs install to the Program Files folder by default. Click the **Next** button.

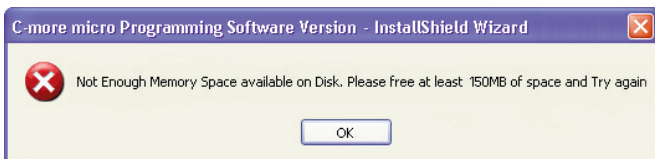


***NOTE:** It is recommended that you install the software and future updates in the default folder*



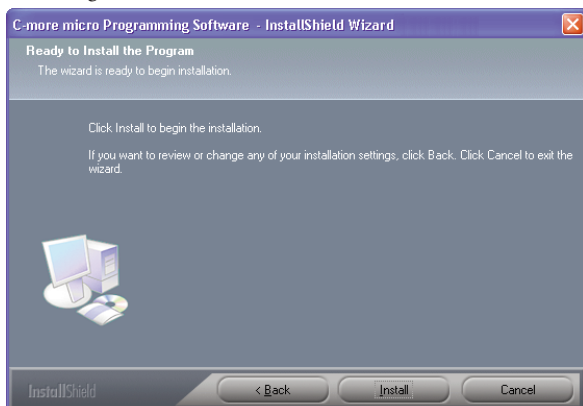
***NOTE:** The Disk Space Error Message means that there is not enough disk space available on the personal computer. Free up at least 150MB of disk space and try again.*

Selecting **OK** terminates the installation.

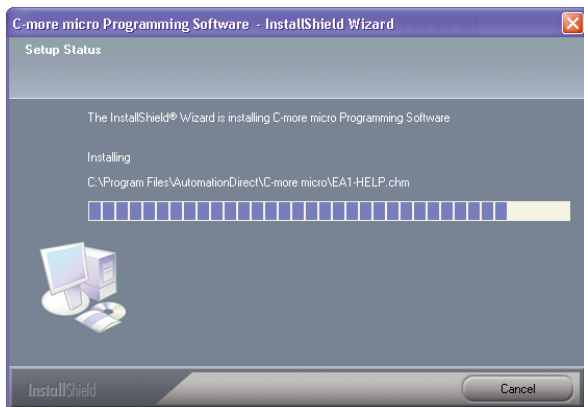


Step 8: Program Installation

The InstallShield Wizard is now ready to begin installing the **C-more Micro-Graphic Programming Software**. Click **Install** to begin.



The screen provides information on the status of the install. This could take a few minutes based on the speed of your PC. Please wait until the installation is complete before using any other applications.



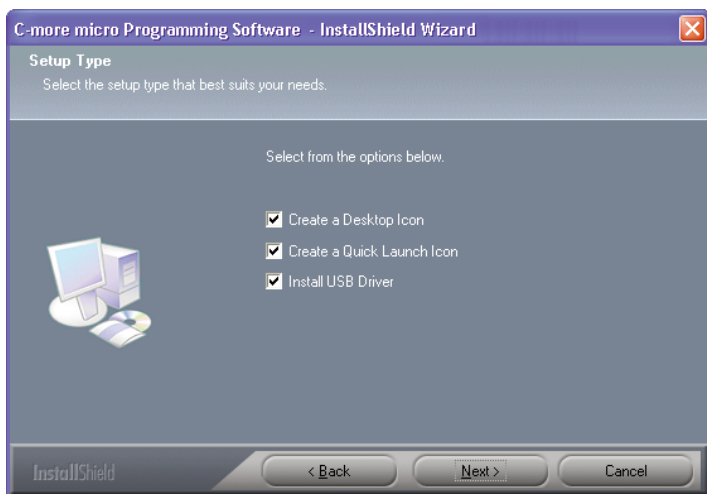
Step 9: Installation of **C-more** Micro Start Icon



C-more Micro-Graphic Programming Software will install a Start icon, help file icon and a read me file icon into the Start Menu.

If you would like to have the software place start icons on your desktop and in the quick-launch window, leave the options selected.

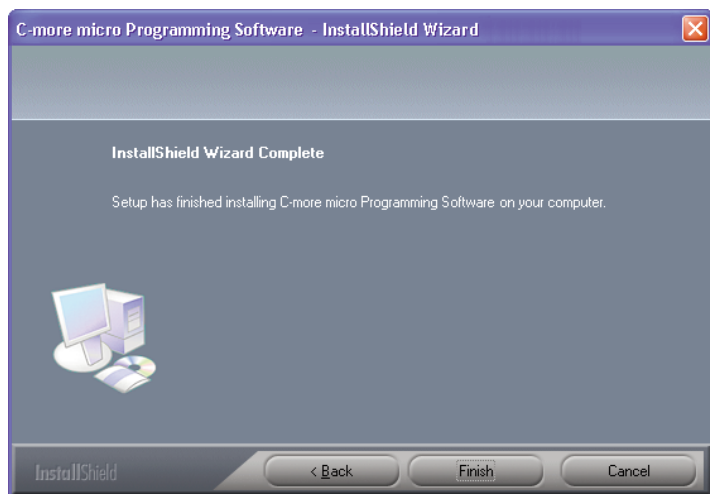
If you do not want the icons installed, uncheck the boxes.
Click **Next**.



NOTE: The USB driver must be installed in order to program the **C-more** Micro panel.

Installation of the *C-more* Micro-Graphic Programming Software is now complete.

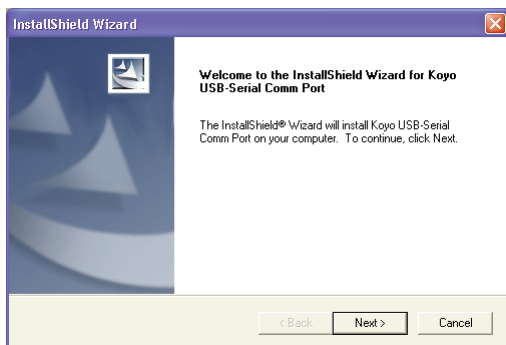
Click **Finish**



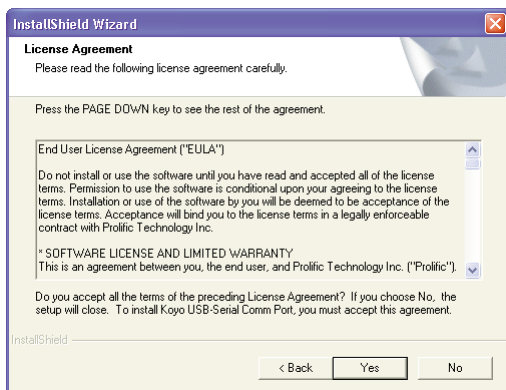
Step 10: *C-more* micro USB Driver install

If the Install USB Driver option was selected in Step 8, the USB Install Shield will begin after the *C-more* Micro-Graphic start icon is installed.

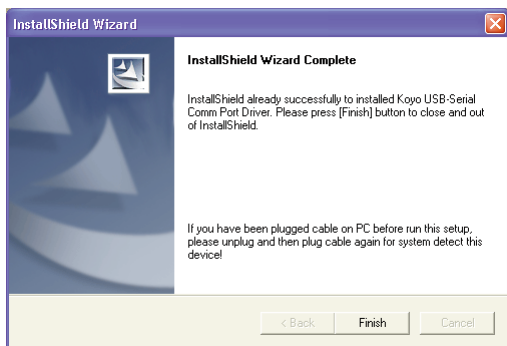
Click **Next** to begin the USB driver installation.



Carefully read the USB driver software license agreement. If you agree to the terms and conditions of this agreement, click the **Yes** button.



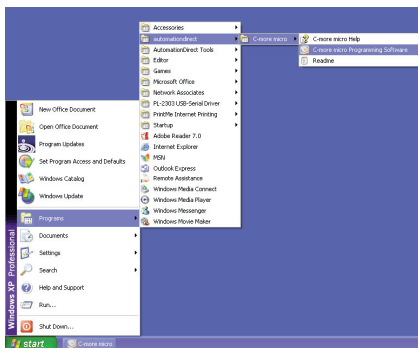
InstallShield Wizard will verify that the installation is complete. Select **Finish**. You may now use the software by selecting the *C-more* Micro-Graphic Programming Software from the Start menu, or the desktop icon if you installed it.



Launch **C-more Micro-Graphic Programming Software**

Launch 1: Start Menu

The installation is now complete and you may use the software by selecting “Start > Programs > AutomationDirect > C-more micro> C-more micro Programming Software” from the Start menu. If you installed the desktop icon you may use it.

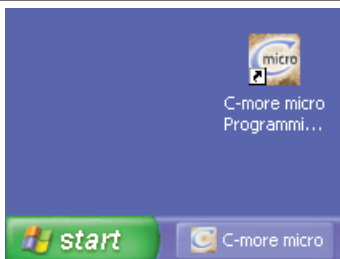


Launch 2: Quick Launch Icon or Desktop Icon

The quickest way to start the software is with the quick-start icon on the Windows task bar or with the desktop icon.



*NOTE: These Icons will only exist if you chose to install them in Step 8: Installation of **C-more** Start Icon.*



Uninstalling the Programming Software

Step 1. Check Log-in Account

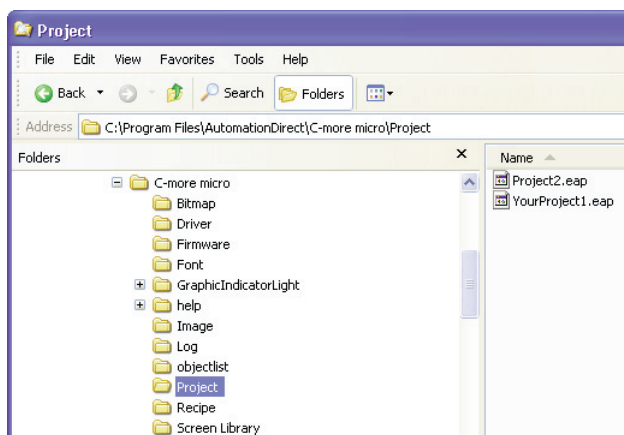
You must be logged on with administrator privileges or be a member of the administrators group to uninstall the *C-more* Micro-Graphic Programming software. If you do not have administrator privileges, please check with your network administrator.

Step 2. Backup Data You Want to Save

If you have saved any projects that you would like to keep, then you will need to make backups of these files. Backup your files such as Project and Library files before uninstalling the software.

Step 3. Remove USB Cable

Remove the USB cable and adapter from between PC and *C-more* before uninstalling software; otherwise the USB driver will still be active.



Step 4. Start Uninstall Process

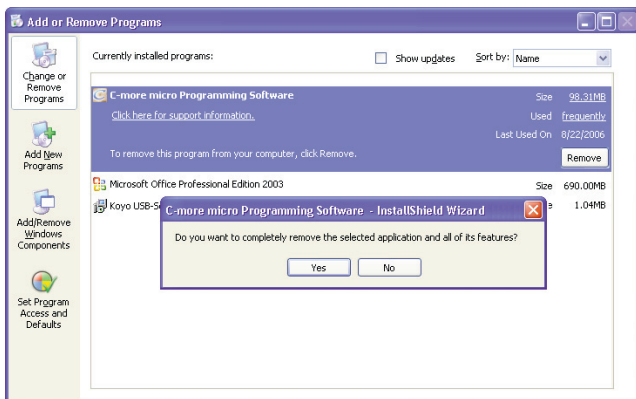


***NOTE:** Make sure the **C-more** Micro USB cable assembly is not connected to the USB port on your PC before beginning the uninstall process.*

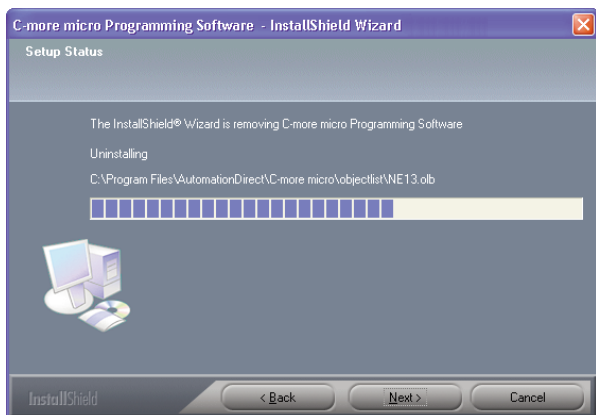
To uninstall the **C-more** Micro-Graphic Programming software click on the **Start** button and then **Control Panel** in the computer taskbar.

Open Add or Remove Programs, and select C-more micro Programming Software.

To remove the program, click **Remove** and then **Yes**.

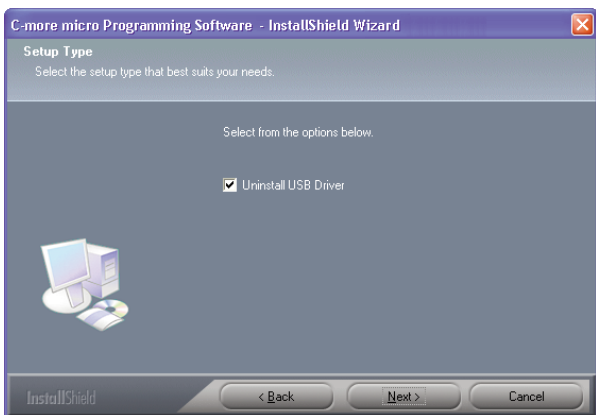


This begins the uninstall process. Information on the status of the uninstall is displayed.



The USB Driver uninstall option window appears.

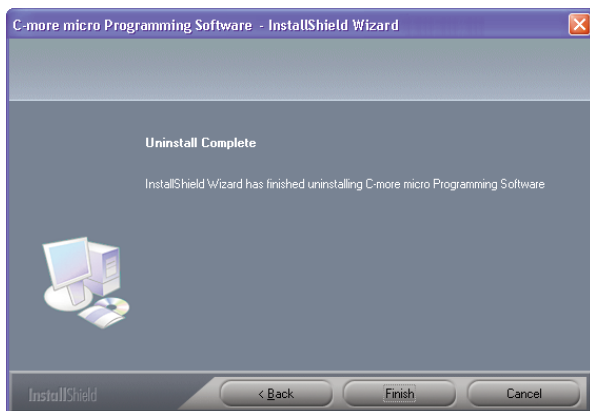
Select the Uninstall USD Driver checkbox and click Next.



The Uninstall Complete window appears.

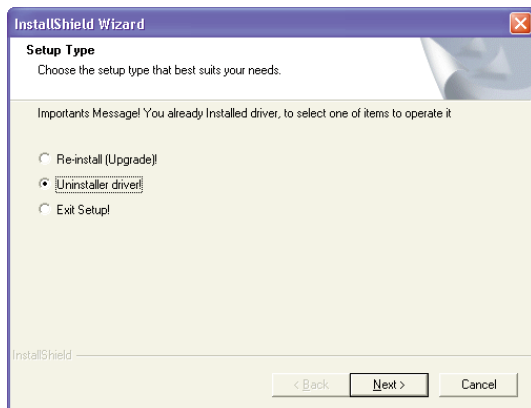
Click **Finish**.

The *C-more* Micro-Graphic Programming software is now removed from your PC.



If the uninstall USB Driver option was checked, the USB Installer setup type window opens.

Select the Uninstall driver button and click **Next**.



The USB driver is now uninstalled. Choose whether you want to restart your computer now or later by selecting the appropriate button. Click **Next** to confirm your choice.

